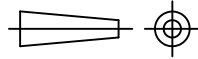
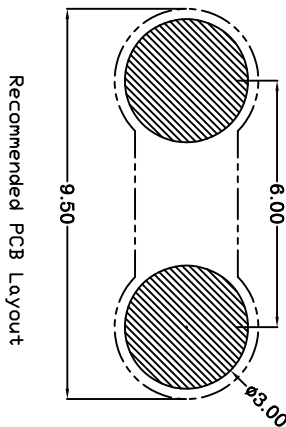
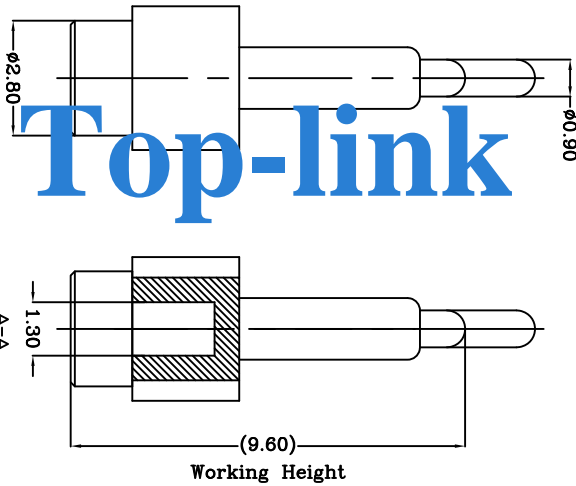
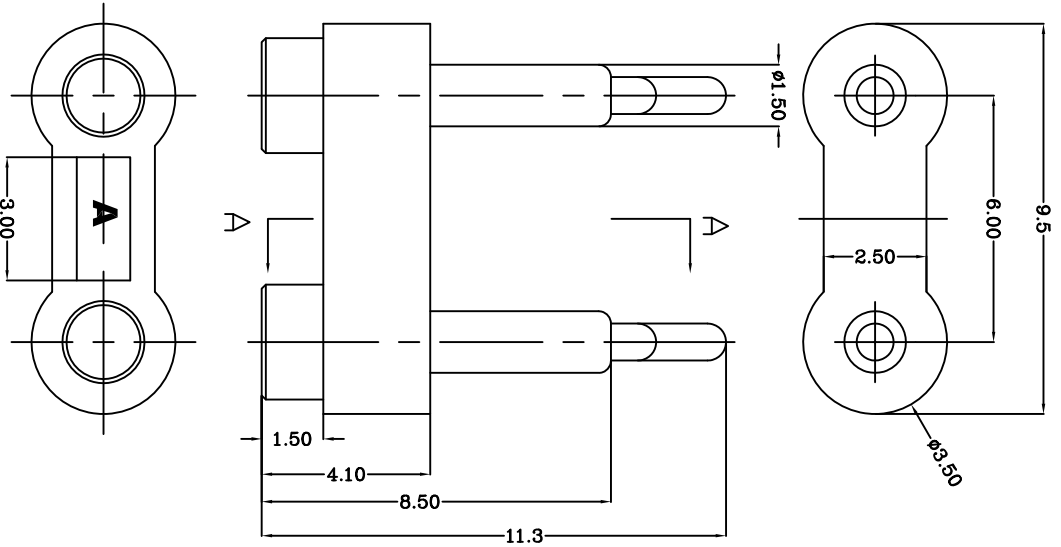


THIS INFORMATION IS CONFIDENTIAL AND IS DISCLOSED TO YOU ON CONDITION THAT NO FURTHER DISCLOSURE IS MADE BY YOU TO OTHER THAN TOP-LINK PERSONNEL WITHOUT WRITTEN AUTHORIZATION FROM TOP-LINK LTD.



DWG NO.
C-100053



- Notes:
- 1 Material, Housing: PA 4.6 (30% Glass Filled)
Color: Black
 - 2 Mechanical demands:
Contact: Brass
Plating Plunger: 0.5um Au over 1.5um Ni
Plating Body: 0.125um Au over 1.4um Ni.

USED DN

LDC	-
DIST	-

LTR	REVISION	RECORD	APVD	DATE
	update	remark		2007/09/07

DIMENSIONS IN MM
TOLERANCES UNLESS
OTHER SPECIFIED

0 = ±
0.0 = ±0.15
0.00 = ±0.10
0.000 = ±

ANGLE: ±1°

SURF TEXTURE: 3.2/

REMOVE BURRS, BREAK
SHARP EDGES R0.05 MAX
DD NOT SCALE PRINT

MATL	HT TR	FIN
1	-	-
DWN	APVD	REL
Benny	Lansing	
CHK	REL	
Andy		
NAME	BATTERY POGO CONNECTOR 2 POSITIONS	
SCALE	DWG	ND
1:1	A4	C-100053

PART NUMBER	100053-2
-------------	----------

Top-Link
Electronics Ltd.

4 3 2 1