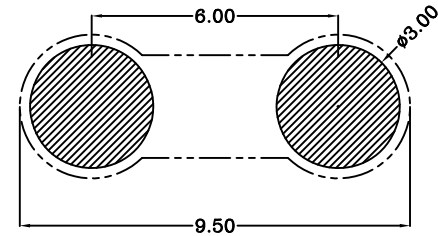
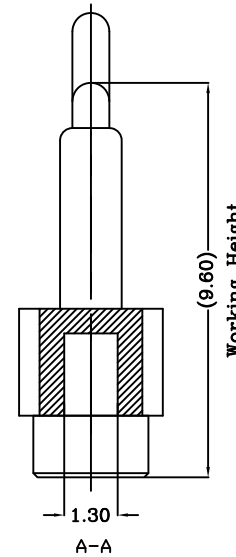
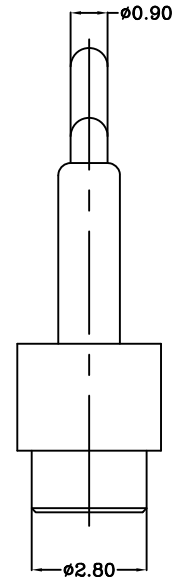
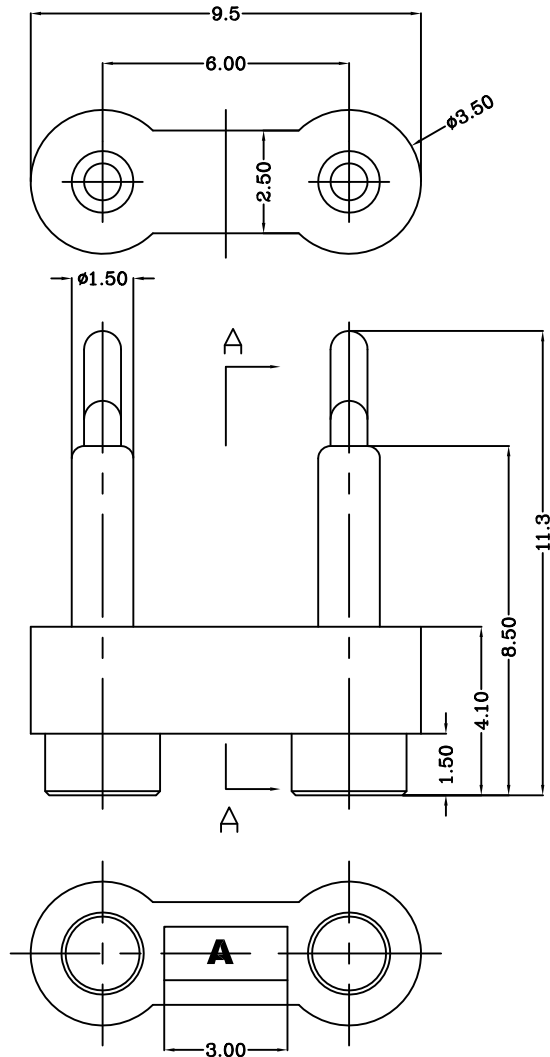


DWG NO.
C-100053



THIS INFORMATION IS CONFIDENTIAL AND IS DISCLOSED TO YOU ON CONDITION THAT NO FURTHER DISCLOSURE IS MADE BY YOU TO OTHER THAN TOP-LINK PERSONNEL WITHOUT WRITTEN AUTHORIZATION FROM TOP-LINK LTD.

LOC	-
DIST	-



Recommended PCB Layout

USED ON
-

Notes:
 1 Material, Housing: PA 4.6 (30% Glass Filled)
 Color Black.
 Contact: Brass
 2 Mechanical demands:
 Plating Plunger: 0.5Um Au over 1.5um Ni
 Plating Body: 0.125Um Au over 1.4um Ni.

100053-2
PART NUMBER

DIMENSIONS IN MM
TOLERANCES UNLESS
OTHER SPECIFIED
 0 = ±-
 0.0 = ±0.15
 0.00 = ±0.10
 0.000 = ±
 ANGLE: ±1°
 SURF TEXTURE: 3.2/
 REMOVE BURRS. BREAK
 SHARP EDGES R0.05 MAX
 DO NOT SCALE PRINT

MATL	△ 1	HT TR	-	FIN	- ✓
DWN	Benny	APVD	Lansing	 Top-Link Electronics Ltd.	
CHK	Andy	REL			
NAME BATTERY POGO CONNECTOR 2 POSITIONS PGC-1.5-11.3-R-2P-6.0PH					
SCALE	1:1	A4	DWG NO.	C-100053	SHEET 1 OF 1 REV B

	update remark		2007/09/07
LTR	REVISION RECORD	APVD	DATE

4

3

2

1