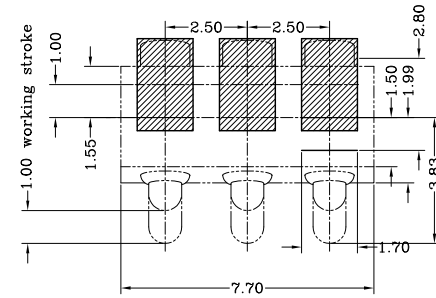
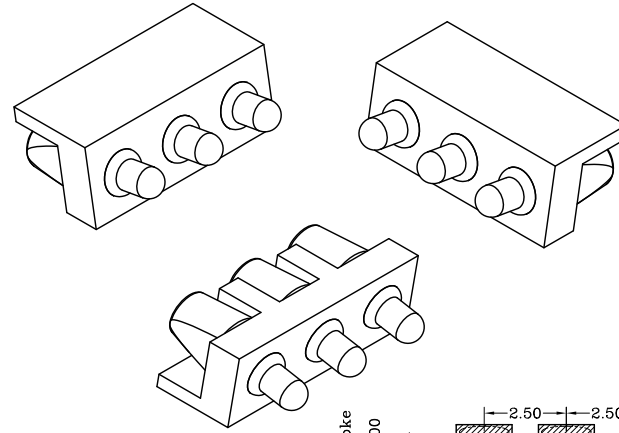
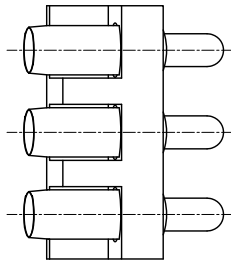
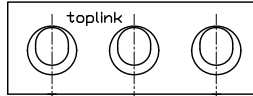
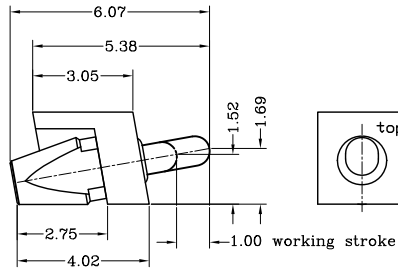
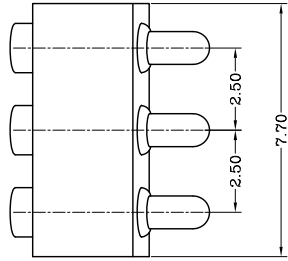
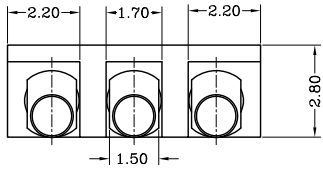
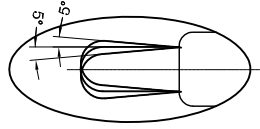


THIS INFORMATION IS CONFIDENTIAL AND IS DISCLOSED TO YOU ON CONDITION THAT NO FURTHER DISCLOSURE IS MADE BY YOU TO OTHER THAN TOP-LINK WITHOUT WRITTEN AUTHORIZATION FROM TOP-LINK ELECTRONICS FACTORY

DWG NO.

C-100514



Recommended P.C.B. layout (Component Side)

Notes:  
 1 Material, Housing: PA 4.6 (30% Glass Filled)  
 Color Black. (UL94V-0)  
 Contact: Brass  
 Plating plunger: Min 0.4um Au over 1.4um Ni  
 Plating body: Min 0.1um Au over 1.4um Ni

USED ON

LOC	-
DIST	-

	NEW		09/05/06
LTR	REVISION RECORD	APVD	DATE

DIMENSIONS IN MM  
 TOLERANCES UNLESS  
 OTHER SPECIFIED  
 0 = ±-  
 0.0 = ±0.10  
 0.00 = ±-  
 0.000 = ±  
 ANGLE: ±1°  
 SURF TEXTURE: 3.2/  
 REMOVE BURRS. BREAK  
 SHARP EDGES R0.05 MAX  
 DO NOT SCALE PRINT

MATL		HT TR	-	FIN	-
DWN	Qin	APVD	Lansing	<i>top-link</i> Top-Link Electronics Ltd.	
CHK	Andy	REL		<i>Electronics</i>	
NAME BATTERY CONNECTOR 3 POS. WITHOUT PILLAR (PGC-1.5-6.0-RA-3P-2.5PH)					
SCALE	1:1	A4	DWG NO.	C-100514	SHEET 1 OF 1
				REV	1

100514-3
PART NUMBER