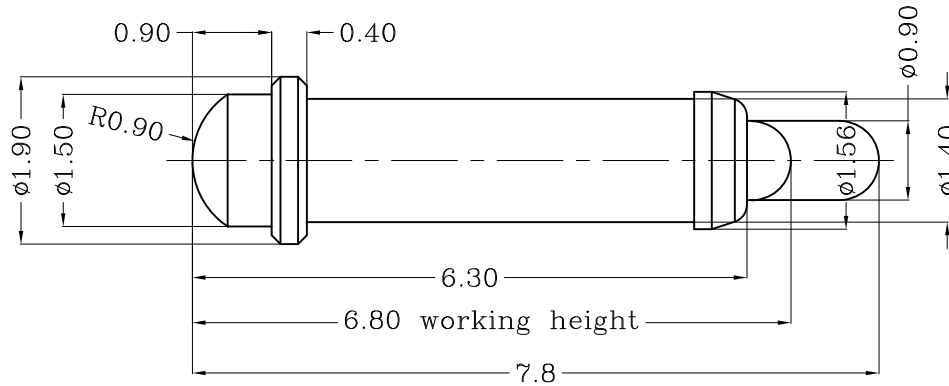


THIS INFORMATION IS CONFIDENTIAL AND IS DISCLOSED TO YOU ON CONDITION THAT NO FURTHER DISCLOSURE IS MADE BY YOU TO OTHER THAN TOP-LINK PERSONNEL WITHOUT WRITTEN AUTHORIZATION FROM TOP-LINK LTD.

DWG NO.
C-101397



USED ON
-



Notes:

- 1) Material(材质):
 - 1) Body : C36000
 - 2) Plunger : C36000 or C27000
 - 3) Spring : Stainless steel wire
- 2) Plating(电镀):
 - 1) Body: Min 0.1um Gold plating over min. 1.4um Nickel plating (Body: 镀金0.1um Min 镍底1.4um Min)
 - 2) Plunger: Min 0.4um Gold plating over min. 1.4um Nickel plating (Plunger: 镀金0.4um Min 镍底1.4um Min)
- 3) Mechanical(机械性能):
 - 1) Force: 110±30gf per pin at 1.0mm stroke (力: 下压1.0mm的力: 110±30gf)
 - 2) Total stroke(总行程) : 1.40mm
 - 3) Durability(寿命): 10,000 cycle min.
- 4) Electrical(电性能)
 - 1) Contact resistance(接触抵抗): 30mOhm Max.
 - 2) Voltage rating(额定电压): 36V DC Max
 - 3) Current rating(额定电流): 2.0A

LDC
-
DIST
-

LTR	NEW	APVD	2010/09/10
REVISION RECORD		DATE	

DIMENSIONS IN MM
TOLERANCES UNLESS
OTHER SPECIFIED
0 = ±-
0.0 = ±0.15
0.00 = ±0.10
0.000 = ±
ANGLE: ±1°
SURF TEXTURE: 3.2/
REMOVE BURRS. BREAK
SHARP EDGES R0.05 MAX
DO NOT SCALE PRINT

MATL	1	HT TR	-	FIN	-
DWN	he	APVD		Top-Link Electronics Ltd.	
CHK		REL			
NAME	POGO PIN				
	PG-1.5-0.9-2.0-0.4-1.4-6.3-7.8				
SCALE	1:1	A4	DWG NO.	C-101453	SHEET 1 OF 1
					REV 1

101453-1

PART NUMBER

4

3

2

1