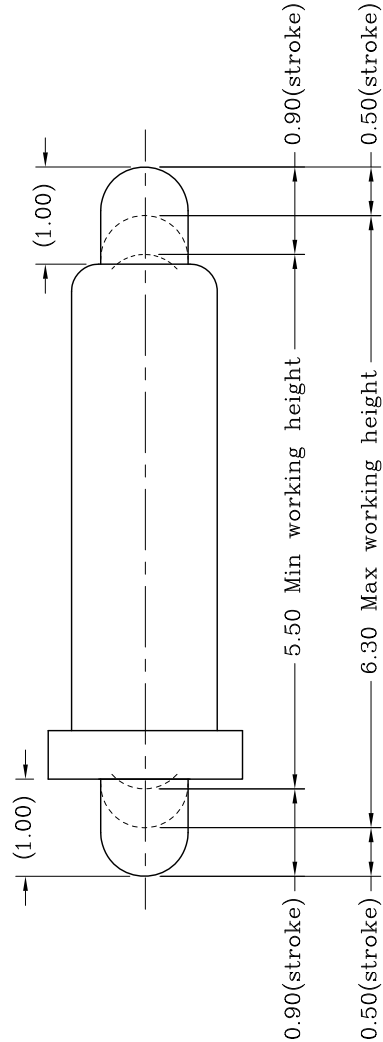
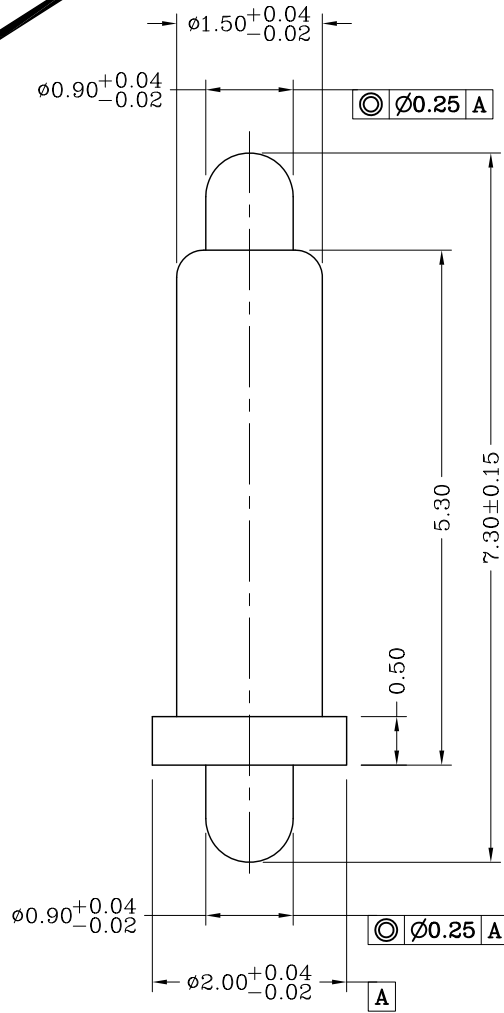




proposal



|                                   |  |       |                  |       |    |         |             |          |
|-----------------------------------|--|-------|------------------|-------|----|---------|-------------|----------|
| Top-Link Electronics Ltd.         |  | Type  | Customer drawing | Unit  | mm | Weight  | 101515-1    |          |
| TOLERANCES UNLESS OTHER SPECIFIED |  | DWN:  | Cai wanlu        | APVD: |    |         | PART NUMBER |          |
| 0.0 = $\pm 0.15$                  |  | CHK:  |                  | REL:  |    |         |             |          |
| 0.00 = $\pm 0.10$                 |  |       |                  |       |    |         |             |          |
| 0.000 = $\pm 0.05$                |  |       |                  |       |    |         |             |          |
| Angle: $\pm 1^\circ$              |  |       |                  |       |    |         |             |          |
| SURF TEXTURE: REMOVE BURRS.       |  |       |                  |       |    |         |             |          |
| BREAK SHARP EDGES                 |  |       |                  |       |    |         |             |          |
| R0.05 MAX.DO NOT SCALE PRINT.     |  |       |                  |       |    |         |             |          |
|                                   |  | Name  | POGO PIN         |       |    |         |             |          |
|                                   |  | Scale | 1:1              | Size  | A4 | DWG No. | C-101515    | Page 1/1 |
|                                   |  |       |                  |       |    |         |             | Rev. 3   |

| Item | Part name | Q'ty/Ea' | Material             | Finish             |
|------|-----------|----------|----------------------|--------------------|
| 1    | Body      | 1        | Leaded Brass         | Au plating over Ni |
| 2    | Plunger   | 2        | Leaded Brass         | Au plating over Ni |
| 3    | Spring    | 1        | Stainless steel wire | —————              |
| 4    |           |          |                      |                    |
| 5    |           |          |                      |                    |

Table 1 Mechanical performance

|                    |            |                |
|--------------------|------------|----------------|
| Max working height | 6.30mm     | 80gf min<2.1>  |
| Min working height | 5.50mm     | 170 $\pm$ 35gf |
| Durability         | 10000cycle |                |

## Notes:

- 1 Dimensions shall be interpreted per ASME Y14.5M.
- 2 Mechanical performance(See the table 1)  
<2.1>The force is the average of forces obtained when plunger goes downwards and upwards.  
<2.2>Warning:Working height are not permitted to be less than Min working height.
- 3 Electrical performance  
Resistance: 30mOhm max  
Current rating: 2.0A
- 4 RoHS compliant.
- 5 Customer P/N: C106

DIST

DIST