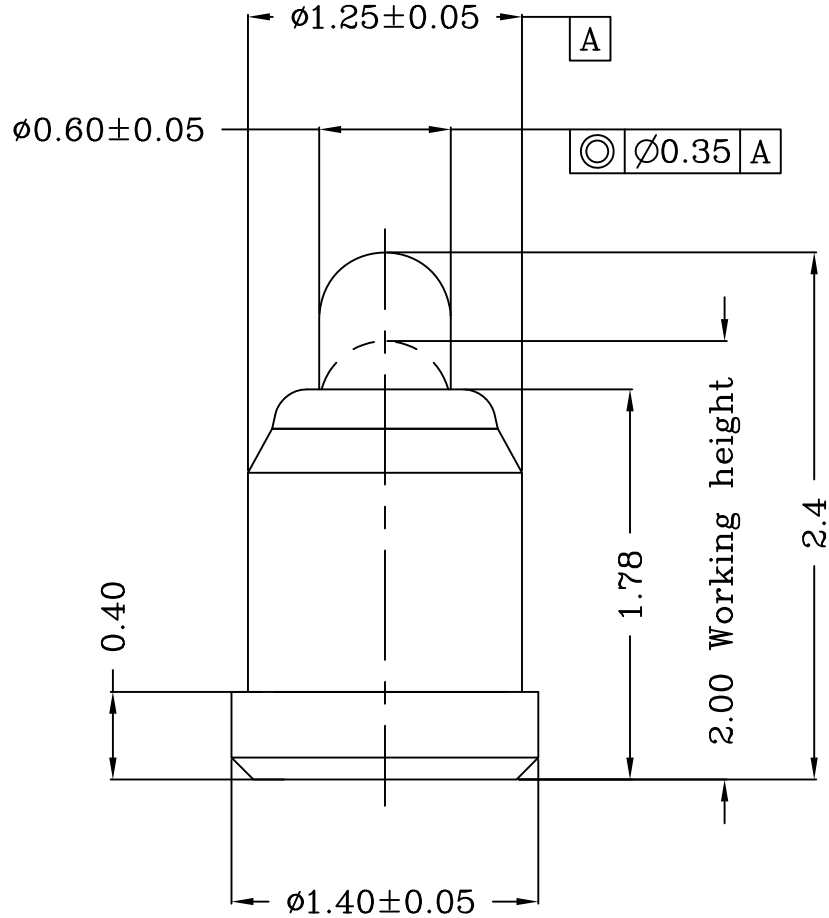


THIS INFORMATION IS CONFIDENTIAL AND IS DISCLOSED TO YOU ON CONDITION THAT NO FURTHER DISCLOSURE IS MADE BY YOU TO OTHER THAN TOP-LINK PERSONNEL WITHOUT WRITTEN AUTHORIZATION FROM TOP-LINK LTD.



DWG No.: C-101633



Item	Part name	Q'ty/Ea'	Material	Finish
1	Body	1	Leaded Brass	Au plating over Ni
2	Plunger	1	Leaded Brass	Au plating over Ni
3	Spring	1	Stainless steel wire	—————
4				
5				

Table 1 Mechanical performance

working height	2.0mm	60±20gf <3.1>
Durability	10000cycle	


Notes:

- 1 Dimensions shall be interpreted per ASME Y14.5M.
- 2 Mechanical performance(See the table 1)  
<3.1>The force is the average of forces obtained when plunger goes downwards and upwards.
- 3 Electrical performance  
Resistance: 50mOhm Max  
Current rating: 1.0A
- 4 RoHS complaint.

DIST  
---

DIST  
---

	NEW	2011/05/23
Rev.	Revision record.	Date.

Top-Link Electronics Ltd.		Type Customer drawing	Unit mm	Weight _____
TOLERANCES UNLESS OTHER SPECIFIED		DWN: Qin	APVD:	 Top-Link Electronics Ltd.
0. = ± 0.15		CHK:	REL:	
0.00 = ± 0.10				
0.000= ± 0.000		Name POGO PIN PG-1.4-0.4-1.25-1.78-2.40		
Angle: ± 1°		Scale 1:1	Size A4	DWG No. C-101633
SURF TEXTURE: REMOVE BURRS. BREAK SHARP EDGES R0.05 MAX.DO NOT SCALE PRINT.				Page 1/1
				Rev. A

101633-1  
PART NUMBER